

# State of Wyoming Corner Record

(In compliance with the **CORNER PERPETUATION AND FILING ACT**, Wyoming Statutes, 1997 Section 33-29-140 et. seq., and the Rules and Regulations of the Board of Professional Engineers and Professional Land Surveyors)

Revised 1/19/2010

Reverse side of this form may be used if more space is needed.

Record of original survey and citation of source of historical information (if corner is lost or obliterated). Description of corner monumentation evidence found and/or monument and accessories established to perpetuate the location of this corner. Sketch of relative location of monument, accessories, and reference points with course and distance to adjacent corner(s) (if determined in this survey). Method and rationale for reestablishment of lost or obliterated corner.

**FOUND:** FOUND 5/8" REBAR NEAR NW CORNER OF SECTION 3 T12N R60W-DOES NOT MATCH TIES ON CORNER RECORDATION FORM ON FILE AT COUNTY CLERK'S OFFICE FILED BY PLS 5910 -FOUND REBAR NOT ACCEPTED AS MONUMENT SAID SW CORNER OF SECTION 34-FOUND PLS 5910 MONUMENT FOR SAID CORNER AS DESCRIBED IN CORNER RECORDATION FORM N87°37'W- 32.1 FEET FROM REBAR

**REMOVED:** BY AGREEMENT WITH JEFFERY B. JONES, PLS 5910, THIS MONUMENT HAS BEEN REMOVED TO HONOR THE 1911 BRASS CAPS FOUND EITHER SIDE OF THIS POINT DURING BLM'S 2008 DEPENDENT RESURVEY OF SECTION 4.

**SET:** SET 3 1/4" ALUMINUM CAP ON 3/4"x 30" REBAR INSCRIBED AVI PC WY PLS NO. 555 STAMPED APPROPRIATELY FOR THE CORNER AT PROPORTIONED BLM CORNER POSITION BETWEEN THE FOUND 1911 GLO BRASS CAPS FOUND ON THE 2008 BLM SURVEY.

- NOTE:**
- 1) THIS CORNER RECORDATION FORM IS BEING FILED TO CORRECT THE CORNER RECORDATION FORM SIGNED 8-30-07.
  - 2) FOR ADDITIONAL INFORMATION ON THIS CORNER SEE MAP OF SURVEY FOR T12N R60W AND A PORTION OF T13N R60W ON FILE AT THE LARAMIE COUNTY CLERK'S OFFICE IN SURVEY CABINET 4 MAP 29 AND BOOK 2149 PAGE 59
  - 3) SEE ATTACHED PHOTOS FOR ADDITIONAL DETAILS



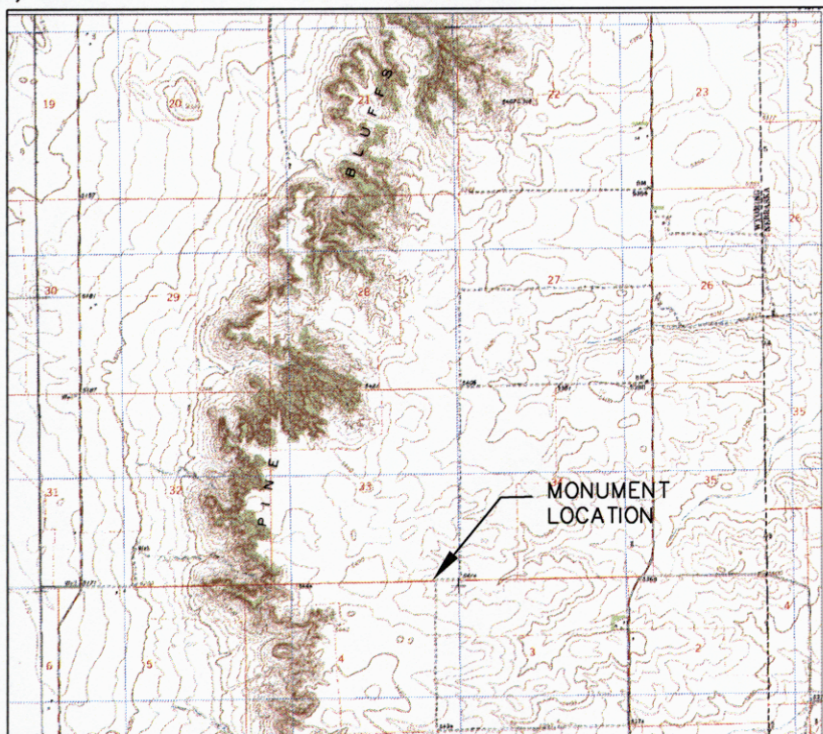
**Monument Removed**



**Monument Not Accepted**  
5/8" REBAR FOUND UNDER ROCK



**Set Monument Inscription**  
(Set)



**Monument location**

Date of Field Work: 5/25/2007 & 1-21-2010 Office Reference: 2655

## Cross Index Plat

	1	2	3	4	5	6	7	8	9	10	11	12	13	14	15	16	17	18	19	20	21	22	23	24	25
A	+	+	+	+	+	+	+	+	+	+	+	+	+	+	+	+	+	+	+	+	+	+	+	+	+
B	+	6	+	+	5	+	+	+	4	+	+	+	3	+	+	+	2	+	+	1	+	+	+	+	+
C	+	+	+	+	+	+	+	+	+	+	+	+	+	+	+	+	+	+	+	+	+	+	+	+	+
D	+	+	+	+	+	+	+	+	+	+	+	+	+	+	+	+	+	+	+	+	+	+	+	+	+
E	+	+	+	+	+	+	+	+	+	+	+	+	+	+	+	+	+	+	+	+	+	+	+	+	+
F	+	+	+	+	+	+	+	+	+	+	+	+	+	+	+	+	+	+	+	+	+	+	+	+	+
G	+	7	+	+	8	+	+	+	9	+	+	+	10	+	+	+	11	+	+	12	+	+	+	+	+
H	+	+	+	+	+	+	+	+	+	+	+	+	+	+	+	+	+	+	+	+	+	+	+	+	+
J	+	+	+	+	+	+	+	+	+	+	+	+	+	+	+	+	+	+	+	+	+	+	+	+	+
K	+	+	+	+	+	+	+	+	+	+	+	+	+	+	+	+	+	+	+	+	+	+	+	+	+
L	+	18	+	+	17	+	+	+	16	+	+	+	15	+	+	+	14	+	+	13	+	+	+	+	+
M	+	+	+	+	+	+	+	+	+	+	+	+	+	+	+	+	+	+	+	+	+	+	+	+	+
N	+	+	+	+	+	+	+	+	+	+	+	+	+	+	+	+	+	+	+	+	+	+	+	+	+
O	+	+	+	+	+	+	+	+	+	+	+	+	+	+	+	+	+	+	+	+	+	+	+	+	+
P	+	19	+	+	20	+	+	+	21	+	+	+	22	+	+	+	23	+	+	24	+	+	+	+	+
Q	+	+	+	+	+	+	+	+	+	+	+	+	+	+	+	+	+	+	+	+	+	+	+	+	+
R	+	+	+	+	+	+	+	+	+	+	+	+	+	+	+	+	+	+	+	+	+	+	+	+	+
S	+	+	+	+	+	+	+	+	+	+	+	+	+	+	+	+	+	+	+	+	+	+	+	+	+
T	+	30	+	+	29	+	+	+	28	+	+	+	27	+	+	+	26	+	+	25	+	+	+	+	+
U	+	+	+	+	+	+	+	+	+	+	+	+	+	+	+	+	+	+	+	+	+	+	+	+	+
V	+	+	+	+	+	+	+	+	+	+	+	+	+	+	+	+	+	+	+	+	+	+	+	+	+
W	+	+	+	+	+	+	+	+	+	+	+	+	+	+	+	+	+	+	+	+	+	+	+	+	+
X	+	31	+	+	32	+	+	+	33	+	+	+	34	+	+	+	35	+	+	36	+	+	+	+	+
Y	+	+	+	+	+	+	+	+	+	+	+	+	+	+	+	+	+	+	+	+	+	+	+	+	+
Z	+	+	+	+	+	+	+	+	+	+	+	+	+	+	+	+	+	+	+	+	+	+	+	+	+

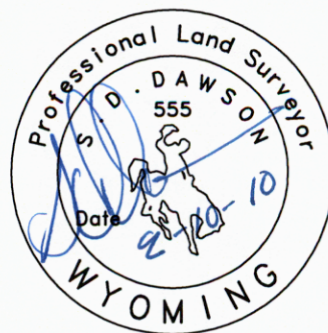
Firm/Agency, Address

AVI P.C.  
1101 OLD TOWN LANE SUITE 101  
CHEYENNE, WY. 82001

Telephone Number: 307-637-6017

This corner record was prepared by me or under my direction and supervision.

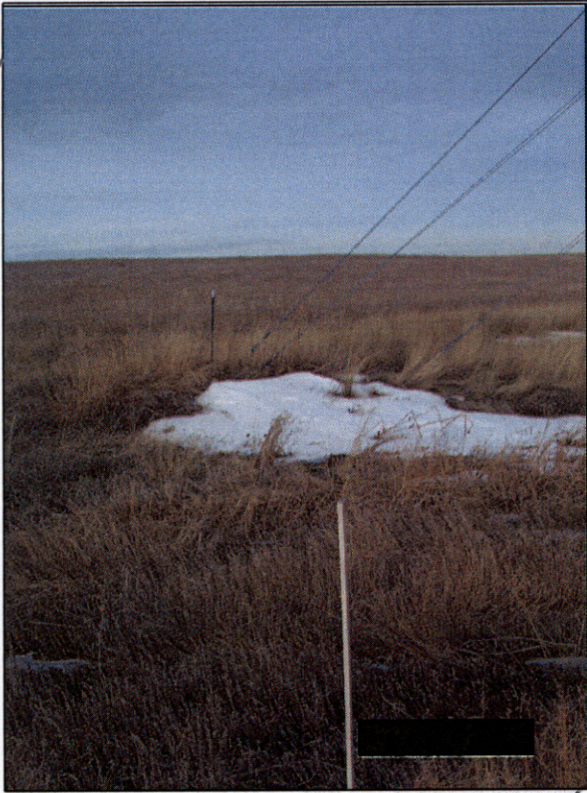
**SEAL & SIGNATURE**



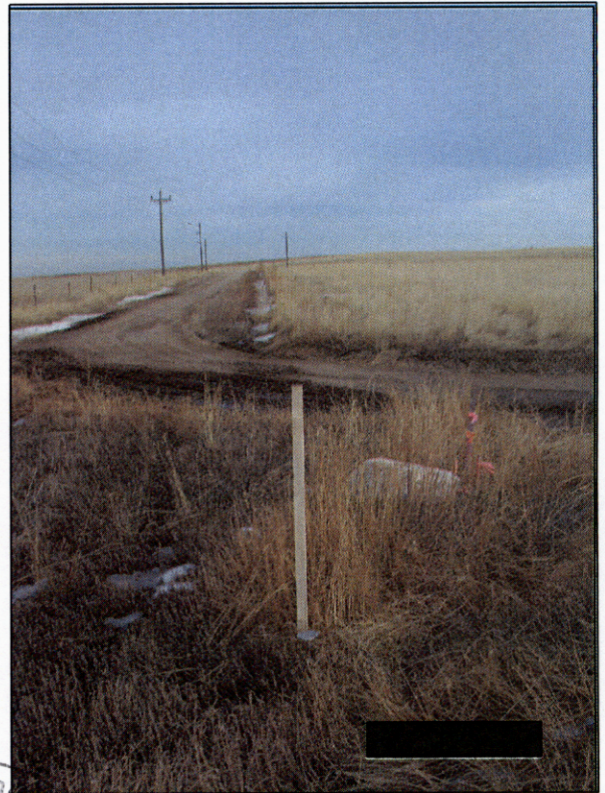
Corner Name NW Corner Section 3, T 12 N, R 60 W, 6th P.M.  
County: LARAMIE Wyoming  
SBRPEPLS/PLSW: March 1994; PLSW January 1998

Cross-Index No.: A-13

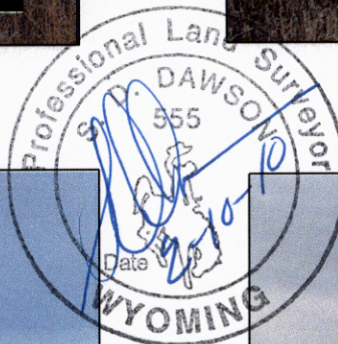
RECORDED 2/10/2010 AT 2:16 PM REC# 538984 BK# 2150 P# 1260  
 DEBRA K. LATHROP, CLERK OF LARAMIE COUNTY, WY PAGE 1 OF 2



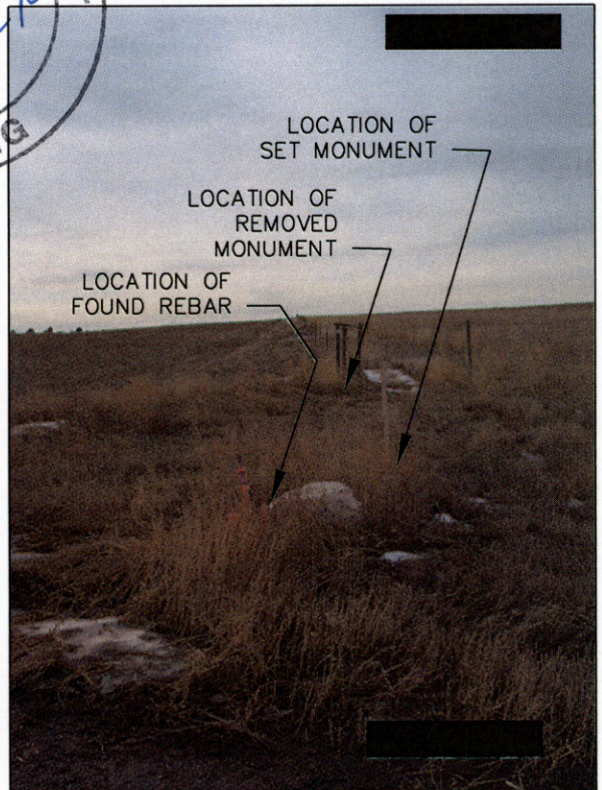
View North



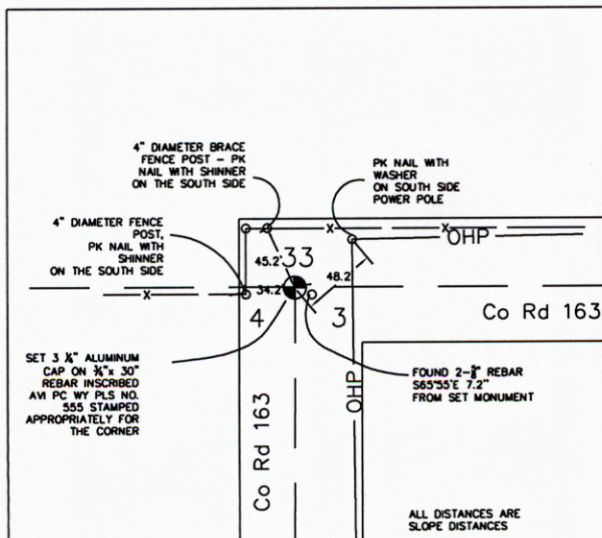
View East



View South



View West



**Monument Ties**

Corner Name NW Corner Section 3, T 12 N, R 60 W, 6th P.M.

FOUND REBAR 1-21-2010

